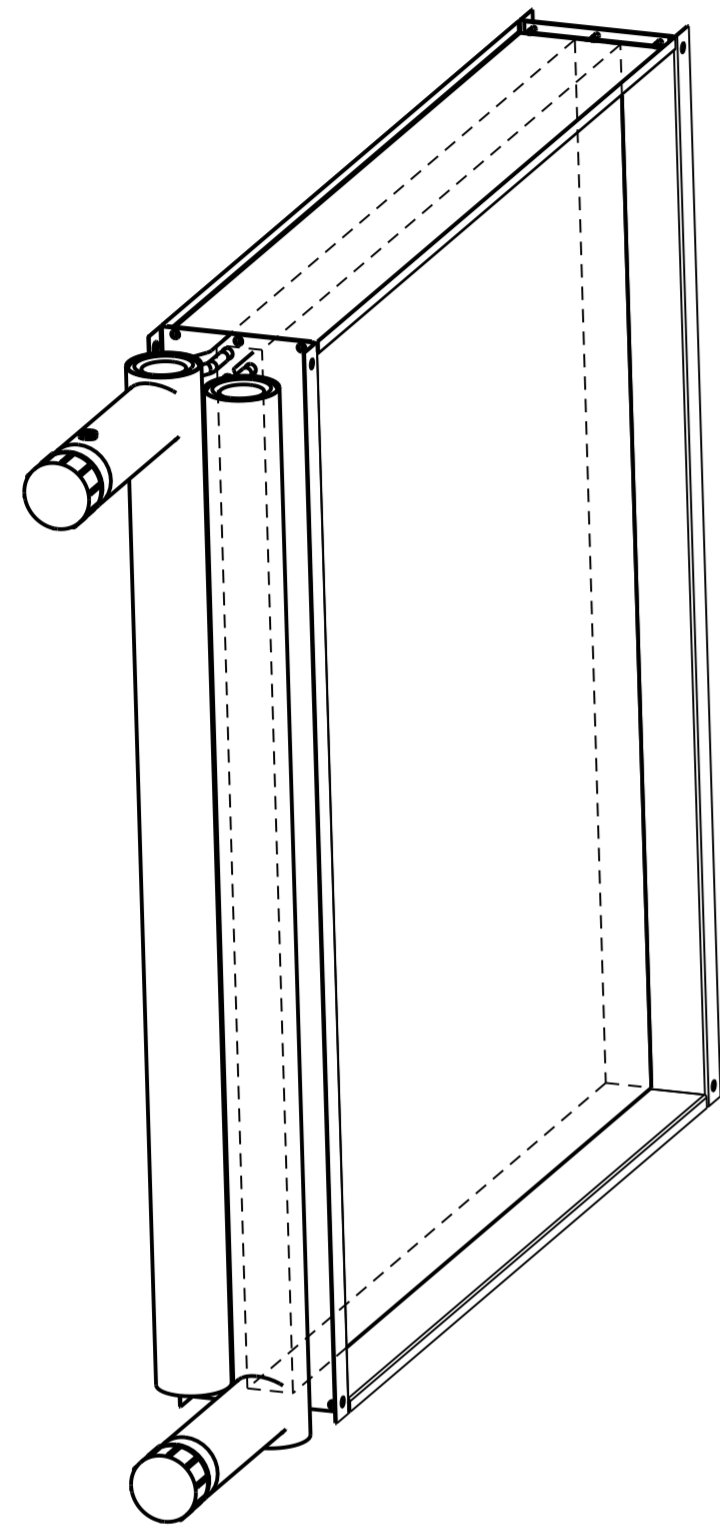
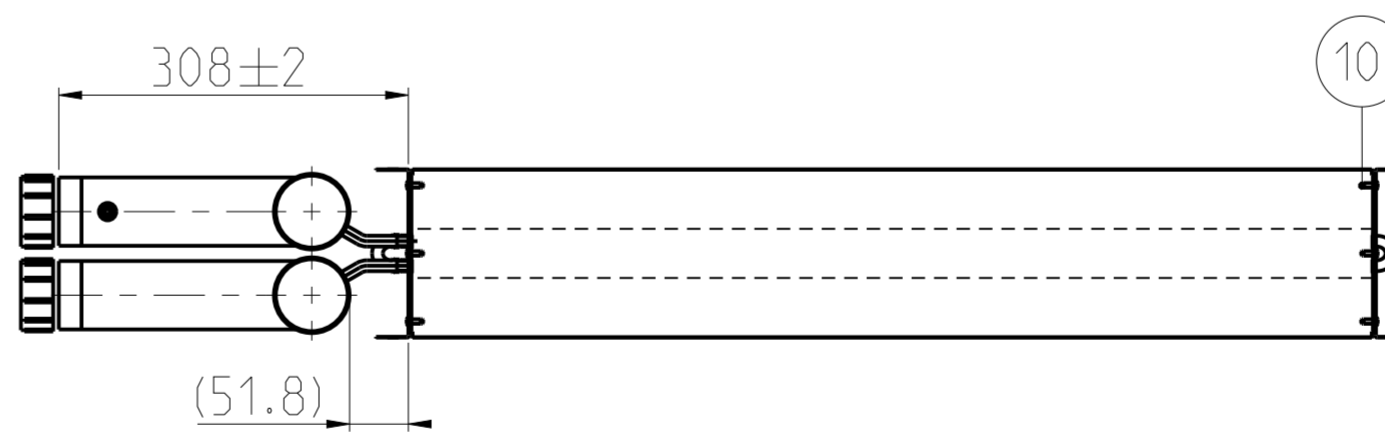
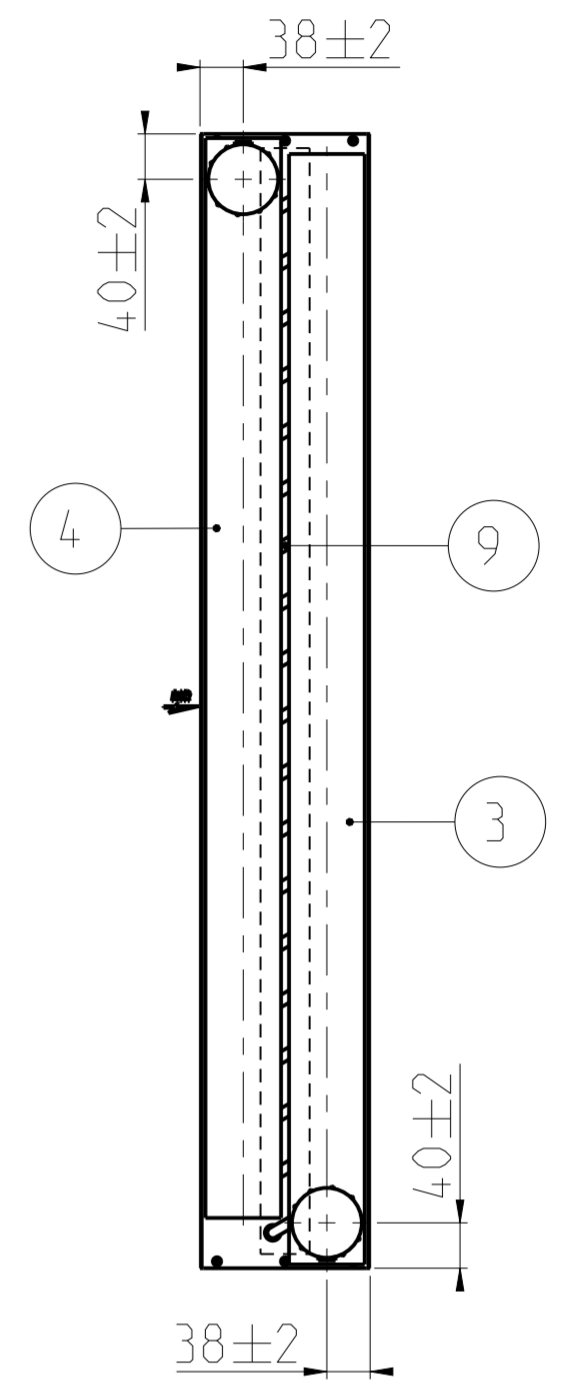
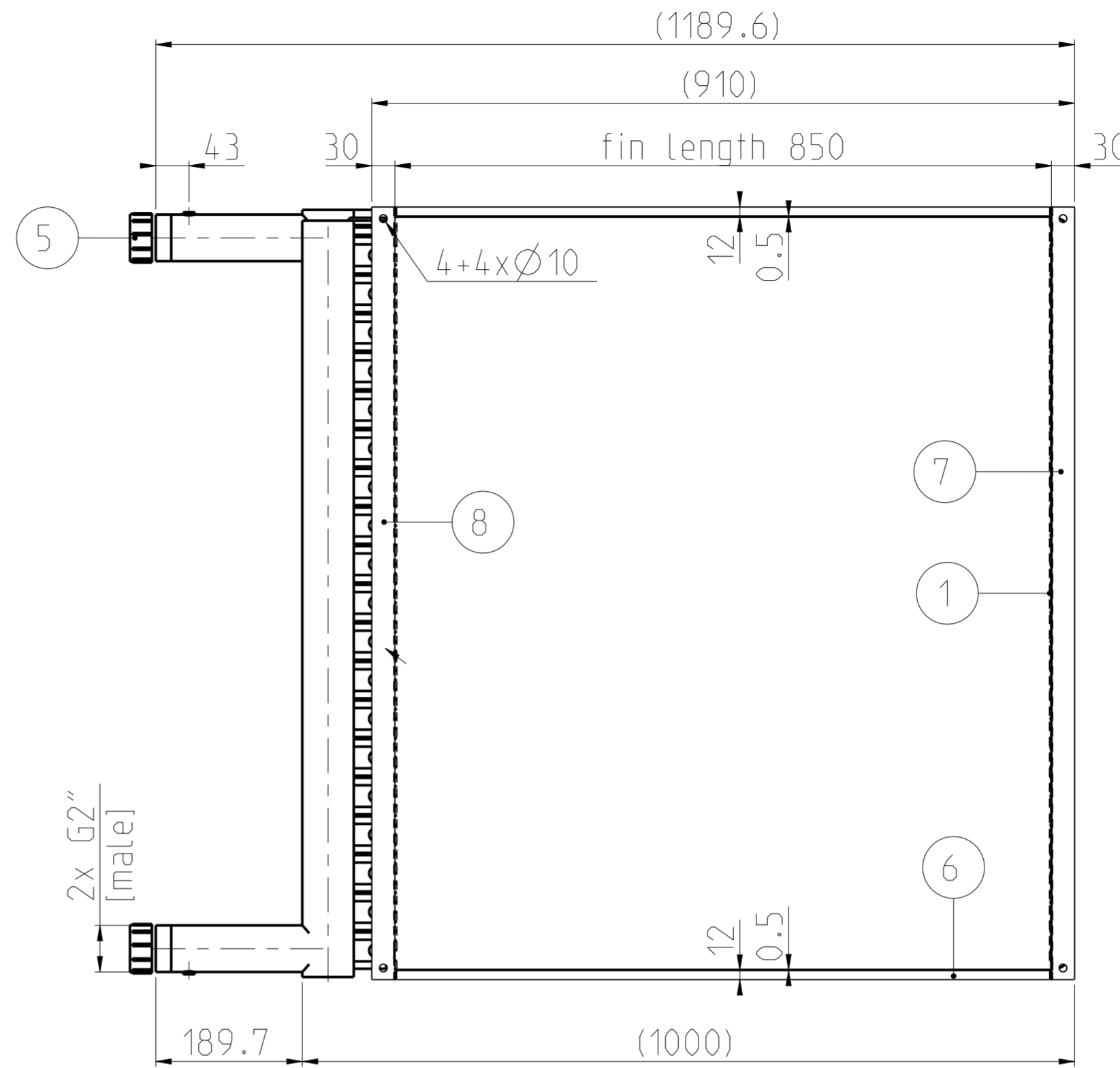
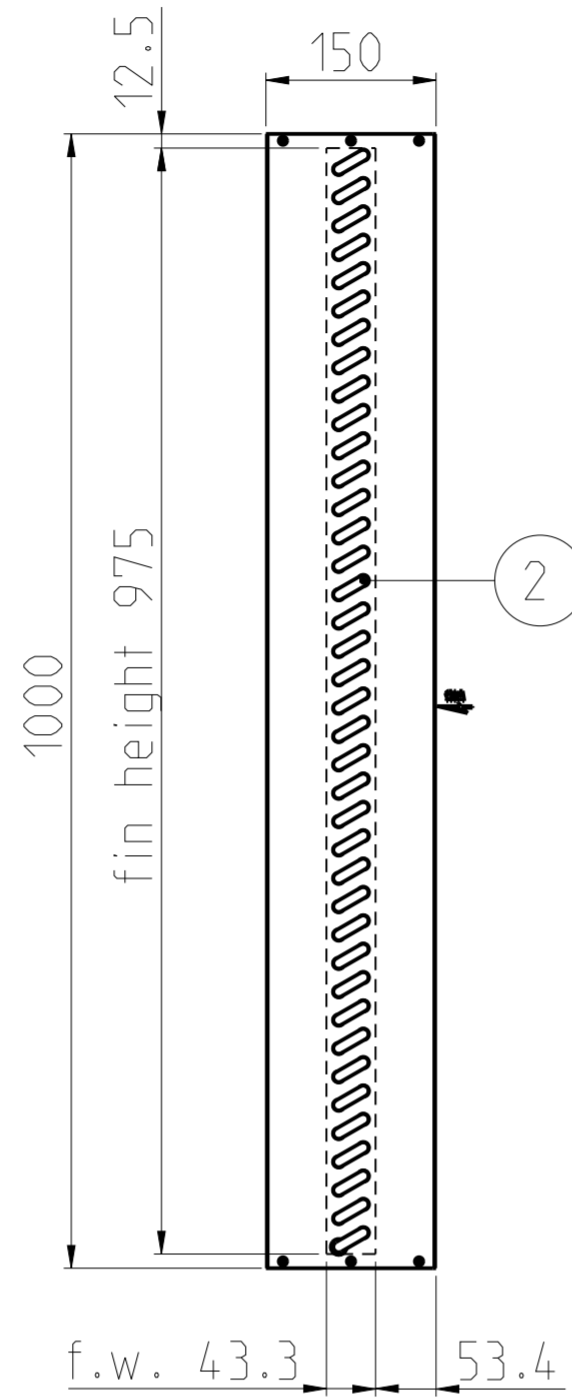


TS<sub>1</sub> ≤ 110 °C PS<sub>1</sub> = 16 bar  
 TS<sub>2</sub> = 110 - 130 °C PS<sub>2</sub> = 10 bar  
 FLUID: WATER



ECHELLE 0.150



idx	Qty	Description	Material	Part Num.
10	12	RIVET Ø4	Steel/Steel	VS4040660
9	19	Return bend (kolinko) R : 25	Tube Cu Ø3/8"	CO101A134
8	1	End plates with collet	Steel galva. 15/10	PGBPF7549
7	1	End plates with collet	Steel galva. 15/10	PGBPF7548
6	2	Plate	Steel galva. 12/10	HBBPF1395
5	2	Cape Norme 350	Plastique	BE0350002
4	1	Outlet header	Copper Ø 2"5/8	COBPA5702
3	1	Inlet header	Copper Ø 2"5/8	COBPA5701
2	39	Epingle D : 25	Tube Cu Ø3/8" smooth/hladka	
1	365	Fin right 3S3 2N 39T 2.31 mm	ALU	

Approximate weight

23.540 kg

Date: 18.7.2013	Customer: IOANNINA 178kW	Protection:
Drawn: TPA	Reference Number:	
Checked: RBA	Description: W 3S3G023908502310201ALDGOM--PS	Material:
Part Number: BPA22R280		Revision: -
Scale: 0.2	Format: A2	Sheet/Sheets: 1/2